



Autism
Jersey

ANNUAL REPORT 2021

ACCOUNTS YEAR ENDED 30 APRIL 2021

OUR MISSION STATEMENT

ENABLING PEOPLE ON THE AUTISM
SPECTRUM TO ACHIEVE THEIR
POTENTIAL BY **ADVOCATING**
FOR AN **INCLUSIVE** COMMUNITY
AND PROVIDING **PERSONALISED**
SERVICES TO INDIVIDUALS, FAMILIES
AND CARERS

Contents

Details of Officers	3
Message from Nick Winsor, Chairman	4-5
Message from Chris Dunne, Chief Executive Officer	6-7
Message from Lionel Gomes, Head of Operational Services	8
Message from Niki Cross, Head of Children's Support Services	9
Message from Danielle Wharton, Head of Adult Support Services	10-11
Message from Cheryl Ferey, Head of Training & Development	12-13
Message from Kerry O'Donovan, Support Services Coordinator and Counselling Service Coordinator	14-15
Message from Cheryl Hanlin, Family Events & Mentoring Coordinator	16-17
Message from Kate Kelly, Fundraising & Marketing Manager	18-19
Message from Karen Gallichan & Catherine Tubb, Boutique Managers	20-21
Message from Brendan Dowling, Treasurer	22
Independent Reviewer's Report	23
Trustees' Responsibilities	24-25
Statement of Financial Activities	26
Statement of Financial Position	27

Details of Officers



PATRON

Air Chief Marshal Sir Stephen Dalton
GCB LLD (Hon) DSc (Hon) BSc FRAes CCMI
From March 2017

CHAIRMAN	VICE-CHAIRMAN	SECRETARY	TREASURER
Nicholas Winsor MBE Appointed 19 July 2011	Dr Helen Miles Appointed 24 February 2010	Jacquelyn Marsh Appointed 9 February 2016	Brendan Dowling Appointed 12 December 2012

TRUSTEES

Cormac Timothy Appointed 20 July 2010	Cora Binchy Appointed 14 February 2017	Tiegan Little Appointed 21 November 2018
Caroline Costello Appointed 6 October 2014	Elizabeth Le Guillou Appointed 14 February 2017	Myles Hartley Appointed September 2018
Daragh McDermott Appointed 3 May 2012	Richard Woolsey Appointed 15 May 2018	

AUTISM JERSEY

Century Buildings
Patriotic Place
St Helier
JE2 3AF

BANKERS

Lloyds Bank Offshore Ltd
9 Broad Street
St Helier
JE4 8NG

INDEPENDENT REVIEWERS

RSM Channel Islands Ltd
PO Box 179
40 Esplanade
St Helier
JE4 9RJ

Message from Nick Winsor

Chairman



No one reading this report will be surprised to learn that responding to the challenges of Covid 19 has been the top priority for everyone at Autism Jersey over the past year. I am immensely proud of the commitment, hard work and resilience of my colleagues. They have supported each other and the people that we work with, to keep all of our services running with the minimum of interruption. That is some achievement.

In fact, as you go through the pages that follow you will see that your charity has actually grown during this difficult time. We have expanded the commissioned services provided to both adults and children and developed our charitable services such as counselling, family support and information. All of this has contributed to the strong financial performance set out in the Treasurer's Report and we look to the future with confidence.

Despite all the positives, there is more work to do. There are families waiting for badly needed support and we expect that this demand will grow as awareness of autism increases. This is putting pressure on our staff, both recruitment and retention. Our response is to make Autism Jersey a great place to work, offering an attractive and rewarding career, supported by wonderful colleagues and underpinned by excellent training.

At its heart, Autism Jersey is very much a people focused charity. However, like many organisations we have had to adapt in response to Covid 19. The investment in technology made over several years has paid off, enabling us to operate virtually when face-to-face contact has not been possible. I fully expect that some of these new ways of working, initially viewed as temporary, will become permanent as we emerge from the pandemic.

On the other side of the coin, and to illustrate the importance of the human touch, the Autism Jersey Boutique has

proven to be a real success story in its new location. Business is up, despite the inevitable restrictions imposed from time to time. In addition to this, the store acts as a "Shop Window" for the services we provide and Catherine, Karen and their team of volunteers do a great job offering advice and support to walk-in customers.

The Centre for Autism project is progressing, inevitably more slowly than we had hoped due to Covid 19, and we are now waiting to hear the outcome of our planning application, which is expected later in the year. Andium Homes and their contractors have proven to be excellent partners for this project and I must thank everyone involved, particularly those that have provided financial backing, for the support that we have received.

Finally, our relationship with the States of Jersey remains as strong as ever and is a key enabler for our work. It is impossible to fully acknowledge the valuable contribution of so many people, but I do hope that this annual report will give you a flavour. On behalf of the Board of Trustees, I would like to thank Chris and the Autism Jersey team, our donors, supporters, trustees and volunteers for making Autism Jersey so successful.

Message from Chris Dunne

Chief Executive Officer



Well, in many ways, 2020/21 has been as challenging and interesting as 2019/20.

I must start by thanking all staff and volunteers in Autism Jersey for their continued dedication, hard work, and commitment to all that we do. You are an amazing group of people, and I am proud to work alongside you, and because of you, Autism Jersey continues to go from strength to strength.

It feels that Autism Jersey has turned a corner in, not only its ambition to be the best provider of advice, information and direct support regarding autism, but to being the professional organisation it is today, attaining high quality outcomes on behalf of autistic people and their families. I believe we have taken great strides in achieving both.

As an organisation, we are now very well organised from a business perspective, with excellent HR and administration support, and equally excellent financial support, both providing a great foundation for the organisation to run effectively and efficiently. The services we provide continue to be of an outstanding quality, with continuous improvements across the provision of short break services and supported living services, and we continue to deliver a comprehensive range of charitable services, free to those people who benefit so much.

This success is well evidenced with us having received our first inspection from the Jersey Care Commission, which I am very pleased to say was a very positive outcome for us. We are also awaiting the final report for the renewal of our accreditation with the National Autistic Society, where we have applied for advanced status. We have received a copy of the inspector's initial report, which, again, reads very well for us. We are now awaiting the outcome of the NAS panel review, to see if we have, in fact, achieved Advanced Status.

We continue to receive incredible support from within the wider community in Jersey, and we are very grateful for this. This is very important to us, as we know we must raise approximately 300K per annum to be able to continue to provide all the charitable 'free at the point of delivery' services that we do. These services are often low level or early intervention that are so important to individuals and families in need of help and advice. However, I would like to specifically thank both the Grand Hotel and Ocorian for their very generous support to Autism Jersey in 2021. The Grand Hotel very kindly named Autism Jersey as their Charity of Choice for 2021, and consequently have been incredibly generous with their time and facilities in supporting our Family Events and Family Support services. Ocorian, have also been incredibly generous with a significant financial donation towards the development of the proposed new Autism Centre, and towards the running costs of the Charity over a three-year period.

We are very grateful to you all.

So, what lies ahead for Autism Jersey?

We will endeavour to continue to deliver excellent services and improve all that we do on behalf of autistic people and their families. Our ambition is to continue to grow as a charity, in response to the increasing needs that individuals and families have, and to ensure that autistic people, children and adults, and their families, live a full and meaningful life, as

valued members of our society. We will also continue to campaign to raise the awareness and understanding of autism in Jersey, to enable this to happen.

Finally, I want to say a big thank you to Nick Winsor, Helen Miles, Jackie Marsh and Brendan Dowling, as our Executive Board members, and to all our Board of Trustees, for your continued support in all that we do. On behalf of all of us in Autism Jersey, it is greatly appreciated.



Message from Lionel Gomes

Head of Operational Services



Another busy year for Operational Services 2020/21.

Jersey Care Commission Inspection Report

Once again everyone has worked extremely hard to keep essential services running during these unusual and difficult times. As a direct result of the hard work and dedication of all the staff at AJ's we were recognised by the Jersey Care Commission, when we had our first inspection in November, as achieving best practice in; safeguarding, safe recruitment, staffing arrangements (including induction, training, supervision, staffing levels) and supporting individuals towards greater independence.

The report dated 11th November 2020 is available to view online:

carecommission.je/inspection-reports/

National Autistic Society, Advanced Status Approved Provider application

We are working towards becoming an Advanced Status Approved Provider (ASAP) with the National Autistic Society. It is a way for organisations to demonstrate they offer excellent support to autistic people. We are incredibly proud of the work we do and believe the process of gaining ASAP will only help us improve our services further.

Growth and Challenges

Autism Jersey continuously incorporates feedback from clients and families/carers to ensure our services remain focused on the support needs of autistics. We also ensure this information is given a platform when liaising with our partners in Government.

Despite the challenges caused by the pandemic, we have continued to grow and develop our support services, the hours of support we deliver has increased by a massive 400 hours per week since last year!

In our Children's services, we are working on a Holiday club model which is both inclusive and appropriate to the needs of the children we support. I am excited to say that this much-needed service will look to ensure that every child and family has a "holiday club" option regardless of how complex their needs are. While the Holiday Club model is a wonderful development, recruitment for children's services remains one of our biggest challenges and we need to work with and have support from Government to better understand the reasons for this and address the issues so that we can provide this much-needed support to families.

Message from Niki Cross

Head of Children's Support Services



During another testing year, due to Covid 19, I feel we have achieved so much! Not only have we provided,

3,669.5

HOURS OF DIRECT SUPPORT THIS YEAR

BUT WE ALSO STILL MANAGED TO PROVIDE 279 DIRECT SUPPORT HOURS THROUGH ANOTHER SET OF COMMUNITY, GOVERNMENT LEAD RESTRICTIONS.

This demonstrates the commitment of all staff, and our collective ability to adapt in such trying times. Within this, we have also welcomed two new children into our service and provided a much-needed break for the families, and an increase in social skills and activities for the children.

Following on from the success of how Short Breaks are now allocated island wide for children with additional needs, we have seen progression in a multitude of areas, including that of collaboration between ourselves and outside agencies. This has continued to increase the support available to families, at the correct level for everyone. Understanding across multiple agencies is now greater than ever, and this can only get stronger as time goes by.

Although we were unable to provide our own Holiday Club at Easter, or during the summer, (due to an increase in restrictions placed upon us), we did manage to lend staff across to other specialist clubs during the latter part of the summer so that as many children as possible could gain some form of normality in attending a holiday provision – this was a great example of how working together came to benefit children and families alike.

It truly is a testament to all staff that we have, again, managed to provide much needed support through such strange times. As last year, I cannot state highly enough that, without the dedication of all staff, we would not be able to provide the service that we do.

“

My son really loves the holiday club and I leave him every day knowing that he will have a fantastic time and that he is in good hands with staff that understand his specific needs.

”

Message from Danielle Wharton *Head of Adult Support Services*



Adult Services

The Adult Service has provided support for 18 adults in the last year either in their own home or in the community. We have continued to provide 24/7 support for 2 adults in their own home; one of these adults receives support on a 1:1 staff ratio and the other receives support on a 2:1 staff ratio. 11 adults receive support as a short break service, and we provide respite support for 5 parents or carers of adults living at home.

There have been many highlights in the last year for the adult service. One adult has successfully moved out of their family home into their own flat where they have been working on developing their independent skills such as cooking, managing their finances and domestic skills. They have also been able to access voluntary work opportunities. One adult had an art exhibition down at Greve de Lecq barracks and sold pieces of their artwork as well as doing several talks on autism and art. Some of adults enjoyed accessing a

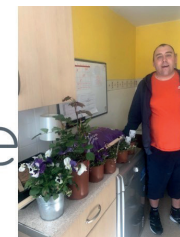
wider range of restaurants in the last year. Wetwheels also continues to be a popular activity for many of our adults.

The Adults Service continues to provide person centred inclusive support with a focus on accessing social opportunities, promoting independence, and accessing paid or voluntary work opportunities.

Adult Social Club

The Adult Social Club has continued to run on Tuesdays and Thursday evenings despite some challenges due to restrictions. Alistair and the members have been able to think out of the box and enjoy many activities in the community such as walk and a drink, tennis, picnics, BBQ's and swimming. The club continues to attract new members and we welcome anyone on the autism spectrum, those who identify as autistic or those who find social interaction difficult.


saltgate
giving



Message from Cheryl Ferey

Head of Training & Development



Training and Development

Here at Autism Jersey the quality of our staff is key to establishing, providing and evidencing good quality support and we continue to be committed to investing in and empowering our staff to reach their full potential.

Mandatory training

- First aid
- Safeguarding
- Manual handling
- Health & safety
- Food safety
- Infection control
- Fire safety
- Data protection

Mandatory training is important because it enables support workers to achieve the standards set by regulatory authorities and meet organisational obligations. The training is renewed every three years and ensures that staff have the skills and knowledge they need to carry out their roles safely and effectively.

Although almost all face to face mandatory training was cancelled due to C19 restrictions, we have been able to ensure all staff have kept mandatory training in date via Social Care TV online training. Social care tv's resources satisfy relevant care standards, inspectorate, learning skills agency and legal requirements.

Specialist/Client specific training

In addition to mandatory training we also ensure staff receive training specific to the individuals they support. This includes diet and nutrition, diabetes, eating disorders, epilepsy awareness and seizure training, and pathological demand avoidance.

MAYBO Conflict Management & Disengagement Techniques

All Maybo training places emphasis on positive and proactive person centred strategies, conflict management and challenging behaviour awareness.

This training is delivered in-house over a two day period by Lionel Gomes and Danielle Wharton.

It has been a constant challenge to facilitate this training over the past year, again, due to restrictions and difficulty sourcing large enough venues. However, we were still able to train and renew training for 40 staff.

SPELL and Autism Awareness

This training is delivered by Assumpta Finn and Heather McClelland of All About Autism. It is not only open to staff but to parents of autistic individuals, family members, carers, professionals, teaching staff and any organisation who simply wants awareness training for their staff.

In November 2020 we were delighted and extremely grateful to be awarded a grant of £30,000 from the Association of Jersey Charities in order for us to continue to offer SPELL and autism awareness training.

Again, restrictions limited the amount of training offered and was further hindered by lack of suitable venues to host the training.

We have however between March 2021 and May 2021 been able to facilitate training to 10 parents and 11 staff members. Training has also been delivered to outside agencies at their own premises between May 2020 and April 2021 including:

- Baker Tilly
- Beresford Street Kitchen
- Durrell Zoo
- New Horizons
- Mind Jersey
- Trackers (Highlands College)
- CLS Learning & Development
- Various Government of Jersey Departments

Professional Qualifications

Service providers should ideally have at least 50% of their staff trained to a professional level, this equates to either NVQ, QCF or RQF level 2, 3 or 5.

We currently employ 80 staff to provide support, this includes service managers, contracted staff and zero hour employees.

At present we have 39 professionally qualified staff (48%), 10 on going learners and another 7 staff booked to commence their studies in January 2022.



Message from Kerry O'Donovan

Support Services Coordinator and Counselling Service Coordinator



Support Service

Providing personalised support for individuals and families continues to be an essential part of what we do at Autism Jersey.

We support individuals and families making contact for early intervention, advice, guidance, and information, as well as signposting, and referral to Autism Jersey services and other services and organisations, in areas including employment, housing, school and education, family, support packages, social opportunities, and the assessment and diagnosis process.

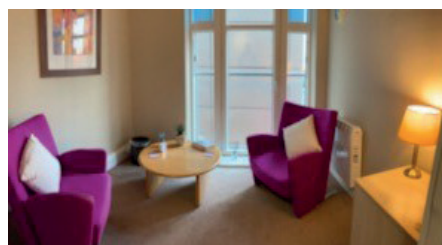
We continue to work collaboratively and in partnership with other agencies and organisations to ensure a shared approach, working together effectively to ensure that individuals and their families can access the right help from the right services.

During the period 1st May 2020 to 30th April 2021, there has been a total of 195 new contacts to Autism Jersey. This has been from individuals, their family members, and other professionals.

We continue to provide ongoing support to over 140 individuals and families.

Counselling Service

We offer a free counselling service for parents and carers of individuals on the autism spectrum or awaiting diagnostic assessment, and other adult family members including siblings, grandparents, and partners.



We have introduced 3 new counsellors in the last year.

The counselling service was adapted during the COVID-19 pandemic to ensure that counselling support was still available. All face-to-face counselling ceased from March 2020 until July 2020, and then again in December 2020 until February 2021, however, we continued to provide our service where possible, by phone or online for those who wished to continue to receive counselling support throughout this period.

During the period 1st May 2020 to 30th April 2021, there was a total of 25 new referrals. This compares to 44 new referrals during the same period last year, and reflects the impact of the COVID-19 pandemic and restrictions to face to face counselling during his time.

However, the number of counselling sessions increased, with 234 counselling sessions attended during this period. This compares to 199 counselling sessions during the same period in the previous year.

Comments from individuals who have accessed the service include:

"I just wanted to say a massive thank you for providing me with the counselling support, it has helped me in more ways than I ever could have imagined".

"I really appreciate the fact that I could access this service, thank you again for your support, it's really appreciated"

"I very much appreciate all the help that Autism Jersey has given to me – what a fantastic service"

"Thank you for providing this service. I'm not sure where I'd be without it"

Message from Cheryl Hanlin

Family Events & Mentoring Coordinator



Family Days

We have had one Autism Jersey Family Day due to the restrictions it was at the bowling and 10 families attended, they had their own booth, and really enjoyed the fun. We will have our first Crazy Golf Month in August which and we will send out vouchers to our families to book direct so far we have 60 included in the golfing fun. We also plan to do Bowling and Swimming for our families using vouchers again, provided the restrictions allow at the time. We have had great feedback from our parents and children who are excited for the days out especially in the summer holidays.

Siblings Days

So far luckily, we have enjoyed 3 siblings' days 2 at St Clements Golf and Tennis Club and 1 at Pizza Express, where we had a fabulous lunch. The children chatted about Christmas, the lockdown and family, they were all so happy to see each other. We have more booked for the future including an Outdoor mini trek for later in the year as well as Jump Jersey and the Maze and the children have requested!

Coffee Mornings

Our monthly Coffee Mornings continue the last Friday of every month. at the Grand Hotel who we have a long-term partnership with, they provide a beautiful setting in their Champagne Lounge with stunning mini pastries and fresh coffee and tea. April 2021 we were lucky to have Directors and other senior staff from Andium Homes at our coffee morning who were very impressed with our special guest and the service that we provide. Director Dominic Caunce said, "It was an absolute pleasure to be invited."

Also, I am delighted to say that we have a Walking, Talking Coffee Morning every Friday, even in the school holidays, as per the parents' request. This includes a healthy, brisk walk round the marinas with like minded people and a coffee or ice cream depending on the weather at the end of our exercise. Usually there are between 4 and 10 each week which is lovely to see as there are now some good connections there.

Healing Waves

There are continuous referrals to Ocean Therapy, over the last year we have referred 25 children and counting. We are hoping to have a Autism Jersey Picnic and we are hoping that they will be attending so they can meet parents and carers on the day for a Q&A.

Mentoring

As this is a new service, we are slowly recruiting mentors I am so pleased to announce that we have 5 mentors to date. 3 who already are up and running with 3 mentees, so far all are happy with the process and having fun. 2 mentors are now trained

and ready to meet with prospective mentees. I keep in regular touch with everyone involved. Including the parents/carers however as you can imagine this is a process that cannot be rushed so hopefully, we will have more positive news in our next report.

Additional Opportunities for our families

Finni's Arc is an animal sanctuary that we work with and Lara who runs the farm and sanctuary contacted us to advise that she would like to work with us and offer their Arc for any of our families who wish to visit, by appointment only. To date we have approximately 50 families who have been referred and visited and have thoroughly enjoyed their time and will be revisiting, this is also available during the school holidays.

Dog Therapy, Jane Fletcher and Balthazar the dog contacted us to offer to volunteer with

Autism Jersey during all summer holidays. Our families visit them at their land in St Lawrence, sometimes with a picnic and spend an hour or two there enjoying the beautiful calm dog and friendly, kind Jane the owner and our volunteer. To date I have referred 14 families however more have contacted her directly via her email as per her request.

Variety of the Seas is an amazing catamaran which is available to us via Ben the Skipper and Paul Pinel the new Chairman of Variety Sailing Trust both who have been invaluable to setting up this amazing opportunity for our families to enjoy being out at sea. They are encouraging them to being a brunch or evening meal to enjoy either the morning Sunday sailing or the midweek evening sailing. We have just launch this again so only 5 families today but I would estimate another 25 families in the next coming year which is absolutely fantastic!



Message from Kate Kelly

Fundraising & Marketing Manager



Covid restrictions impacted greatly on our ability to arrange proposed events during the period of May 2020, through until April 2021. However, it certainly did not stop us, or all our wonderful supporters who kept busy by taking a different approach to various fundraising activities, including: bake sales, bucket shaking, hair 'chops', cakes a plenty, dressing down days, giving it up, trekking, running marathons, and much, much more. What an amazing team!

The Jersey Royal Company chose Autism Jersey as their beneficiary charity for 2020 and offered some wonderful opportunities for our families, including the donation of seedlings for families to enjoy planting and growing together during lockdown. We were extremely appreciative for their kindness and support which they continued to provide into 2021.

In May 2020, we were thrilled to receive a donation from Saltgate Giving who generously provided a grant of £6500 for gross motor and sensory equipment and activities for the children and adults we directly support. This was utilised in many ways and one of our adult service users Daniel, decided to request some

gardening and art supplies to keep him busy whilst he was staying safe at home. Daniel's support worker, Sarah, told us: "The gardening supplies helped Daniel do what he enjoys most when he is out in the garden, and the art supplies made a difference to Daniel because that's what he likes to do in order to relax. Daniel really thought about what he wanted to spend the money on and it has made a massive difference he is so happy and very grateful."

We were thankful to be able to hold our annual Golf Day in August 2020, albeit taking a slightly different approach in line with Government of Jersey Covid guidelines, by using both La Moye Golf Club and Royal Channel Island Yacht Club as hosts for lunch to allow for ample social distancing. 18 teams enjoyed 18 holes of golf before sitting down to enjoy a delicious lunch. Using technology, we were able to link the two lunch venues so that all of the teams could listen to speeches and participate in our raffle and auction at the same time. Overall, we managed to raise an amazing amount of over £34,450! Special thanks to the wonderful support from JT, La Moye Golf Club and the Royal Channel Island Yacht Club for enabling this event.

As we welcomed the arrival of 2021, we were delighted to have been selected as the Grand Jersey's beneficiary charity for 2021. We developed a wonderful start with the Grand Jersey having arranged some room hire for us for staff training and our AGM, and they also hosted coffee mornings for our parents & carers and much more. The Grand Hotel have been extremely supportive by adapting the service they provide in order to make autistic guests more comfortable, and we would love to see this rolled out in other properties eventually. We will continue to work

closely with the Grand across all areas of our organisation.

We were also delighted to be selected as the 2021 beneficiary charity for Rhona's At The Beach Café, Gorey. A lot of people will be familiar with Rhona's for her tasty food, stunning location and friendly service, but many are not aware that Rhona is a super fundraiser and donates all monies raised from the sale of her "Fishfinger Butties" to charity each year. Up until April 2021, Rhona had already raised £1500 from those famous butties, selling some donated items and being the "chicken coop" for over 200 knitted chocolate hens and chicks which were kindly crafted and donated by one of our supporters Linda Traynor. Egg-stra special thanks to Linda and of course Rhona for the awesomeforautism support so far.



Our annual Duck Race also took a different 'route' in 2021 and we arranged our first ever 'Virtual Duck Race'. Using the entertaining Damian Sreenan, we organised for supporters to donate money in return for a 'duck'. To get the ducks racing and to the finish line, people had to "quack" as loudly as they can to make them move! It was great fun, very entertaining and allowed us to raise some much-needed funds to support the important work of Autism Jersey.

Sadly, we could not offer much community presence for 2021's Autism Awareness week, due to ongoing Covid restrictions. Therefore,

we chose this week to launch our newsletter, reaching out and connecting to autistic people, their families, carers, and the general public. We also encouraged people to visit our website and learn more about autism, raising individual awareness and personal knowledge.

We believe that offering such connection opportunities, creates understanding and understanding leads to inclusion, something we all would like to see within our local community.

During Autism Awareness week, Grainville School arranged a fabulous 'in house' fundraiser and awareness day, we were so impressed with their approach that it has given us hope that many other schools will follow in their footsteps to help raise awareness of autism within school and community settings. And we propose to develop an awareness strategy and a working partnership with Children, Young People, Education and Skills in order to do so.

As our financial year drew to an end, we felt positive and excited to be planning events and fundraisers once more. We began to look forward to welcoming our supporters once more, at our annual sponsored walk, L'Etacq & Back, our annual Golf Day and much more.

Heartfelt thanks to our key corporate sponsors, partners, and funders, including:

Association of Jersey Charities, A. Taylor, Ben Cooke, Greville Bathe Foundation, Jersey Funders Group, JT Jersey, Lloyds Foundation, Ocorian Jersey, Overland Charitable Trust, RBC/Law Debenture and the Stella Foundation.

And to all of our many inspirational individual and corporate fundraisers and supporters, THANK YOU! We are truly grateful for another year of wonderful support. Together we are making a difference to the lives of autistic people in Jersey. We rely on fundraising events and activities to support our families and run our charitable services so thank you to each and every one of you, for being #AwesomeForAutism!

Message from Karen Gallichan & Catherine Tubb *Boutique Managers*



This year has continued to be unusual in retail with various restrictions & changing requirements, social distancing, compulsory mask wearing, hand sanitising and lateral flow testing. We certainly never envisaged a time when there be a testing area within our office & taking our volunteers temperature when they come into the Boutique!

Having re-opened with great success in the first week of June 2020, we have kept our team of volunteers small and gradually extended our opening times as more people felt comfortable to come back. The health and safety of our volunteers as well as our wider community has always taken priority and will continue to do so. This was re-iterated on the 30th November when our government advised that all over 70's should avoid indoor mixing with people outside their household. Team Boutique is certainly very dedicated, and we had to be very strict with some of our older volunteers who would rather have carried on. We were ordered to close again on 24th December,

and we were not able to re-open until 3rd February. Strange times indeed.

As well, as the disruption to our opening hours, we have had extra expenses to enable us to open: various signage has been required and of course special cleaning products, including hand sanitizer, viral disinfectant and alcohol spray.

Having said all that, we have been very busy when we are open & the new location at 13 The Parade is superb, in terms of footfall, passing trade and also in giving us so much more space to deliver not only the Boutique's main retail purpose, but also allowing us to provide support to families & deliver meaningful work experience to (currently) 7 autistic adults.

On average we support 1 family a week, through people simply dropping into the Boutique looking for information and support. We refer them on to Kerry O'Donovan our Support Service Coordinator when this is applicable. We are keen to be able to extend this service and later this year we are booked to undertake Mind Jersey's Adult Health First Aid course.

We have recently started using our freshly painted yard for supporting families. It has been invaluable now masks are required again inside, to be able to talk in the tranquil outside space that has been created by RampArts. We would like to extend our thanks to Heather & Ricardo and all the RampArts team, for their awesome assistance.

We have continued to receive a lot of donations, which we are very grateful for. We simply couldn't run the Boutique without this support. Charity shop shopping continues to increase in popularity as the public becomes more conscious of the environmental impact of fast fashion. We are delighted to see younger customers in the Boutique. We also receive lots of compliments on the quality of our stock. We think this is partly due to our window displays. People tend to donate what they see for sale in a charity shop. Our Boutique is well presented, and stylish and we think that this encourages the fantastic donations we receive. Daily, we are told how good our window displays are and they are

certainly very visible by stationary cars at the traffic lights.

We have had a Facebook presence for a number of years, but we have increased this along with an Instagram page, as we look to find different ways to raise awareness of the Boutique and increase our sales. You can find us on Facebook at Autism Jersey Boutique and on Instagram at autismjyboutique. Please give us a follow & you can support us from the comfort of your sofa!

If you would like information on donations or volunteering within the Boutique, or if you would like to drop in and see us, the Boutique phone number is **01534 871678** or we can be contacted via email: **k.gallichan@autismjersey.org** and **c.tubb@autismjersey.org** or via our Facebook page.

Finally, we would like to give a huge round of applause & heartfelt thanks to our team of around 20 volunteers. You make coming to work a real pleasure and we love you all.



Message from Brendan Dowling

Treasurer

The year to 30th April 2021 was indeed a year like no other, and like most charities and businesses Autism Jersey had to adapt to the circumstances created by the pandemic. We are very grateful to all our staff that pulled together to ensure we could continue to provide support to our members throughout the year. The most important number for Autism Jersey will always be the number of hours of support we are able to provide to our members and the families of our members.

Our focus continued to be to deliver as much support as we possibly can and to fund more of our charitable objectives through the support services we provide to families and individuals affected by Autism whilst ensuring that Autism Jersey remains financially stable.

Income and Expenditure

In 2020 Autism Jersey had its first income deficit (-£5,665) since its establishment. The management team implemented a plan of action working with Health and Social Services to conduct a thorough review of all services provided alongside a review of all fixed and variable costs of the charity. The review led to some very positive outcomes which enabled us to have a much more positive year from a financial perspective despite the impact of Covid. In 2021 Autism Jersey managed to generate a surplus of income over expenditure of £96,856 largely down to an increase in income from services provided.

We are very grateful to all those trusts, foundations, individuals and companies who have helped us by giving so generously throughout the year. Without the generosity of our donors and the determination of our fundraisers we would not be able to maintain the charity or provide the services we do to support families. A number of our fundraising events were impacted and had to be cancelled because of Covid and that has had an adverse impact on income in 2021. In 2021 we raised or received donations or fundraising contributions of £134,943 compared to £356,028 in 2020.

Expenditure in the period was higher largely due to the salary costs associated with delivering additional services in 2021 at £1,642,735 compared to £1,532,375 in 2020. A wages bill of £1,373,422 accounts for almost 85% of total expenditure.

Our financial strategy continues to be to achieve a surplus each year whilst ensuring we can continue to grow and support our charitable objectives through the extension of our services.

Our cash flow remains strong with cash held at the end of the year of £776,123 (2020 £532,002). We can and have for a number of years now been able to demonstrate financial stability and we will continue to look for opportunities to reinvest in services and programmes which support our members. I would like to finish by thanking Dania Healy our finance manager for her exceptional work throughout the year in managing and controlling the finances of Autism Jersey.

Independent Reviewers' Report to The Trustees of Autism Jersey



We have reviewed the accounts of Autism Jersey, which comprise the Statement of Financial Position as at 30 April 2021, the Statement of Financial Activities for the year then ended, and notes 1 to 13 to the accounts, including a summary of significant accounting policies.

Respective responsibilities of trustees and reviewer

The trustees are responsible for the preparation of the accounts and for being satisfied that they give a true and fair view. The trustees are also responsible for ensuring that the requirements of the Association's constitution with regard to accounts and independent examination of those accounts are complied with. Responsibility is to perform an independent review of the accounts and express a conclusion thereon. We conducted our review in accordance with International Standard on Review Engagements (ISRE) 2400 (Revised) 'Engagements to Review Historical Financial Statements'. This standard requires us to conclude whether anything has come to our attention that causes us to believe the accounts, taken as whole, are not prepared in all material respects in accordance with the applicable reporting framework. This standard also requires us to comply with relevant ethical requirements.

The report is made solely to the Association's trustees as a body. Our review work has been undertaken so that we might state to the Association's trustees those matters we are required to state to them in the review report and for no other purpose. To the

fullest extent permitted by law, we do not accept or assume responsibility to anyone other than the Association's trustees as a body, for our review work, for this report, or for the conclusions we have formed.

Scope of the review of the accounts

A review of accounts in accordance with ISRE 2400 (Revised) is a limited assurance engagement. The practitioner performs procedures, primarily consisting of making inquiries of trustees and others within the Association, as appropriate, and applying analytical procedures, and evaluates the evidence obtained.

The procedures performed in a review are substantially less than those performed in an audit conducted in accordance with International Standards on Auditing. Accordingly, we do not express an audit opinion on these accounts.

Conclusion

Based on our review, nothing has come to our attention that causes us to believe that the accompanying accounts are not prepared in all material respects in accordance with the Association's stated accounting policies.

RSM Channel Islands Limited
Chartered Accountants
Jersey, C.I.

“

We are very grateful for the support and services we receive from Autism Jersey

”

Trustees' Responsibilities

With regard to the Accounts year end 30 April 2021

The Trustees have elected to prepare accounts for the financial year that show a true and fair view of the state of affairs of Autism Jersey (the "Association") and of the income and expenditure of the Association in accordance with FRS 102 Section 1A.

In preparing the accounts the Trustees are required to:

- Select suitable accounting policies and then apply them consistently;
- State whether applicable accounting standards have been followed, subject to any material departures disclosed and explained in the accounts;
- Make judgements and estimates that are reasonable and prudent; and
- Prepare the accounts on the going concern basis unless it is inappropriate to presume that the Association will continue in operation for the foreseeable future.

The Trustees are responsible for keeping proper accounting records which disclose with reasonable accuracy at any time, the financial position of the Association and enable the Trustees to ensure that the accounts comply with applicable accounting standards and the Association's constitution.

The Trustees are responsible for safeguarding the assets of the Association and hence for taking reasonable steps for the prevention and detection of fraud and other irregularities.

The Trustees confirm that the accounts comply with these requirements.



Statement of Financial Activities

For the year ended 30 April 2021

	Unrestricted General Fund	Restricted Ringfenced Fund	Total Funds 2021	Unrestricted General Fund	Restricted Ringfenced Fund	Total Funds 2020
	£	£	£	£	£	£
Income and endowments						
Donations	94,158	12,000	106,158	211,714	55,000	266,714
Activities for generating funds	753	28,032	28,785	87,573	1,741	89,314
Finance income	25	1,351	1,376	21	2,100	2,121
Income from charitable activities / services provided	1,549,025	-	1,549,025	1,124,210	-	1,124,210
Other income	54,247	-	54,247	44,351	-	44,351
Total incoming and endowments	1,698,208	41,383	1,739,591	1,467,869	58,841	1,526,710
Expenditure						
Raising funds	756	18,683	19,439	40,326	-	40,326
Charitable activities	1,623,296	-	1,623,296	1,481,809	10,240	1,492,049
Total expenditure	1,624,052	18,683	1,642,735	1,522,135	10,240	1,532,375
Net movement in funds	74,156	22,700	96,856	(54,266)	48,601	(5,665)
Funds brought forward at 1 May	182,146	453,973	636,119	236,412	405,372	641,784
Funds carried forward at 30 April	256,302	476,673	732,975	182,146	453,973	636,119

Notes and full accounts can be viewed online at www.autismjersey.org

Statement of Financial Position

As at 30 April 2021



	2021	2020
	£	£
Fixed Assets		
Tangible fixed assets	21,204	28,153
	21,204	28,153
Current Assets		
Debtors	140,791	224,519
Cash at bank and in hand	776,123	532,002
	916,914	756,521
Creditors: amounts falling due within one year	205,143	148,555
Net current Assets	711,771	607,966
Net Assets	732,975	636,119
Restricted Funds		
Ringfenced Fund	476,673	453,973
	476,673	453,973
Unrestricted Funds		
General Fund	256,302	182,146
Net Assets	732,976	636,119

Approved by the board of Trustees of Autism Jersey and signed on its behalf by:

Brendan Dowling
Treasurer

Nicholas Winsor MBE
Chairman

Autism Jersey is the leading charity in Jersey dedicated to the assistance and support of people on the autism spectrum. Our mission is to enable people with autism to achieve their potential by advocating for an inclusive community and providing personalised services to individuals, families and carers.



GET IN TOUCH

Call us: 01534 871888 Email us: ajadmin@autismjersey.org

Write to us: Autism Jersey, Century Buildings, Patriotic Place, St Helier, Jersey, JE2 3AF

autismjersey.org

